

JAYCAR ALUMINUM HUB - CAT YG2784

Jaycar Motor 50kgcm - CAT. NO. YG2738

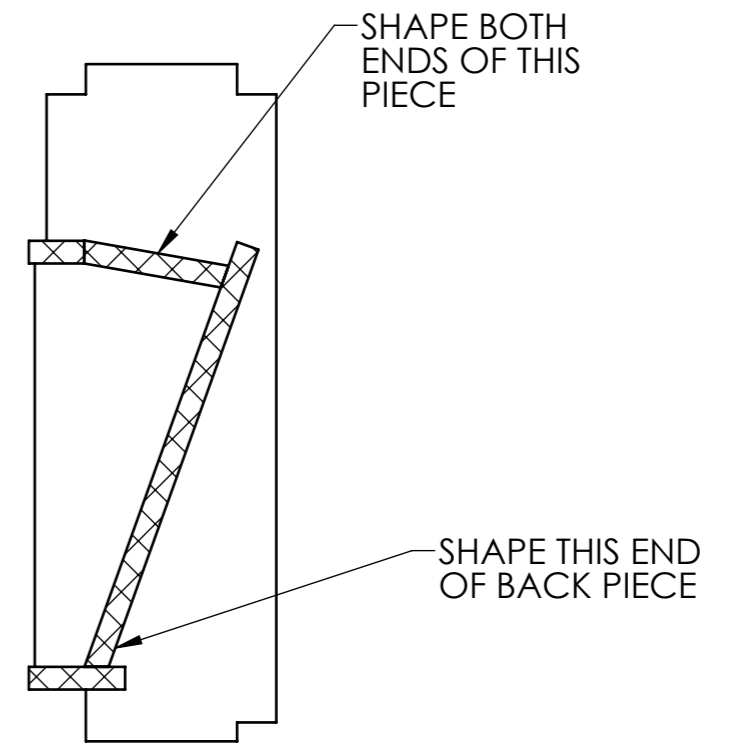
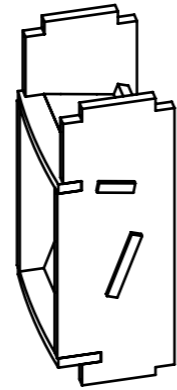
DOME GEAR CONTACT:- PAUL O'MALLEY

DOME BEARING
400mm LAZY SUSAN BEARING
VARIOUS SUPPLIERS
TRY:-
-EBAY
-<http://www.cwsonline.com.au/shop/item/400mm-aluminium-lazy-susan-bearing>

RESIN BITS
CONTACT:-
PAUL O'MALLEY

ITEM	DESCRIPTION	QTY.
1	SKINS - AGP	1
2	SKINS - AGP	1
3	BODY - TOP RING	1
4	BODY - BOTTOM PL - FIXED	1
5	BODY - 2ND RING	1
6	BODY - FRONT DOOR RIB	2
7	BODY - FRONT DOOR RIB - LONG	2
8	BODY - ARM ARC	1
9	BODY - 3RD RING	1
10	BODY - BACK LONG RIB	4
11	BODY - SIDE ARM TOP	2
12	BODY - BACK RIB	2
13	BODY - BACK TOP ARC	2
14	BODY - SHOULDER PLATE	1
15	BODY - SHOULDER PLATE	1
16	BODY - ARM BOX BACK	2
17	BODY FRONT RIB	2
18	BODY - FRONT VENT HOLDER	1
19	BODY - SMALL DOOR FLOOR	1
20	BODY - BOTTOM SIDE	2
21	BODY - SIDE RIBS	4
22	BODY - DRIVE DOUBLE	1
23	BODY - ARM RIB	2
24	BODY - COIN BACK TOP	1
25	BODY - COIN FRONT TOP	1
26	BODY - SIDE FILL	2
27	BODY - BOTTOM SKIN SUPPORT	4
28	SKIRT - SKIRT PLATE	1
29	RB - RING	2
30	RB - RIB	2
31	SKIRT ASSEMBLY - FIXED	1
32	LARGE DATA PORT	1
33	ARM BOX	1
34	COIN RETURN	1
35	COIN RETURN	2
36	JAYCAR ALUMINUM HUB - CAT YG2784	1

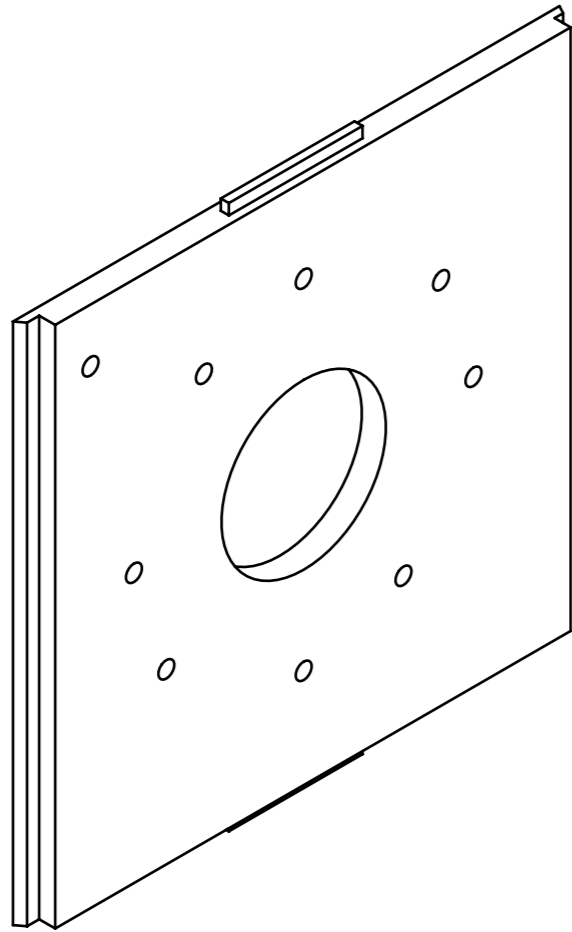
SUGGESTED RC MOTOR CONTROLLER
FROM:-
DIMENSION ENGINEERING
1off MODEL 2x12RC



DRY ASSEMBLE
BEFORE GLUING

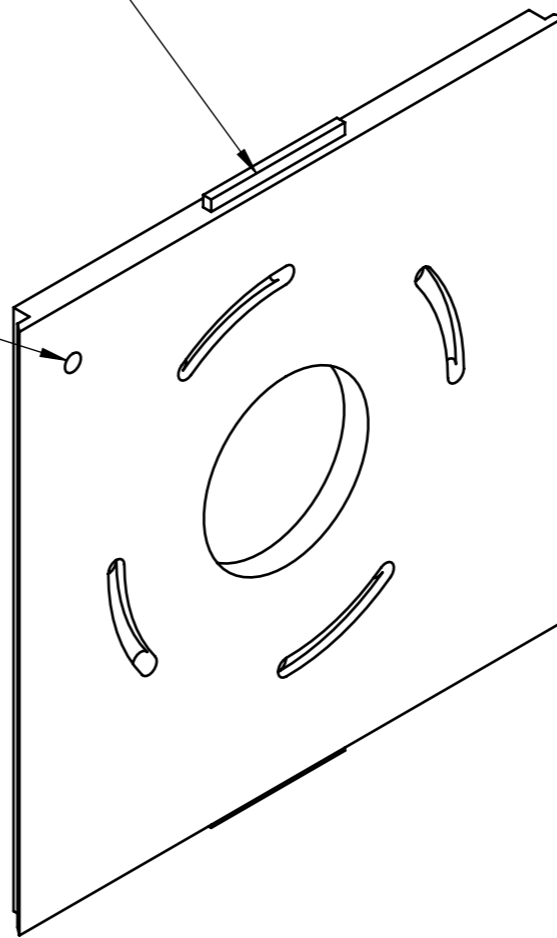
3off REQUIRED

STEP 1



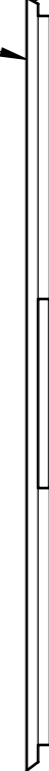
THIS HOLE INDICATES
TOP FRONT

TAB PIECE IN
CENTRE



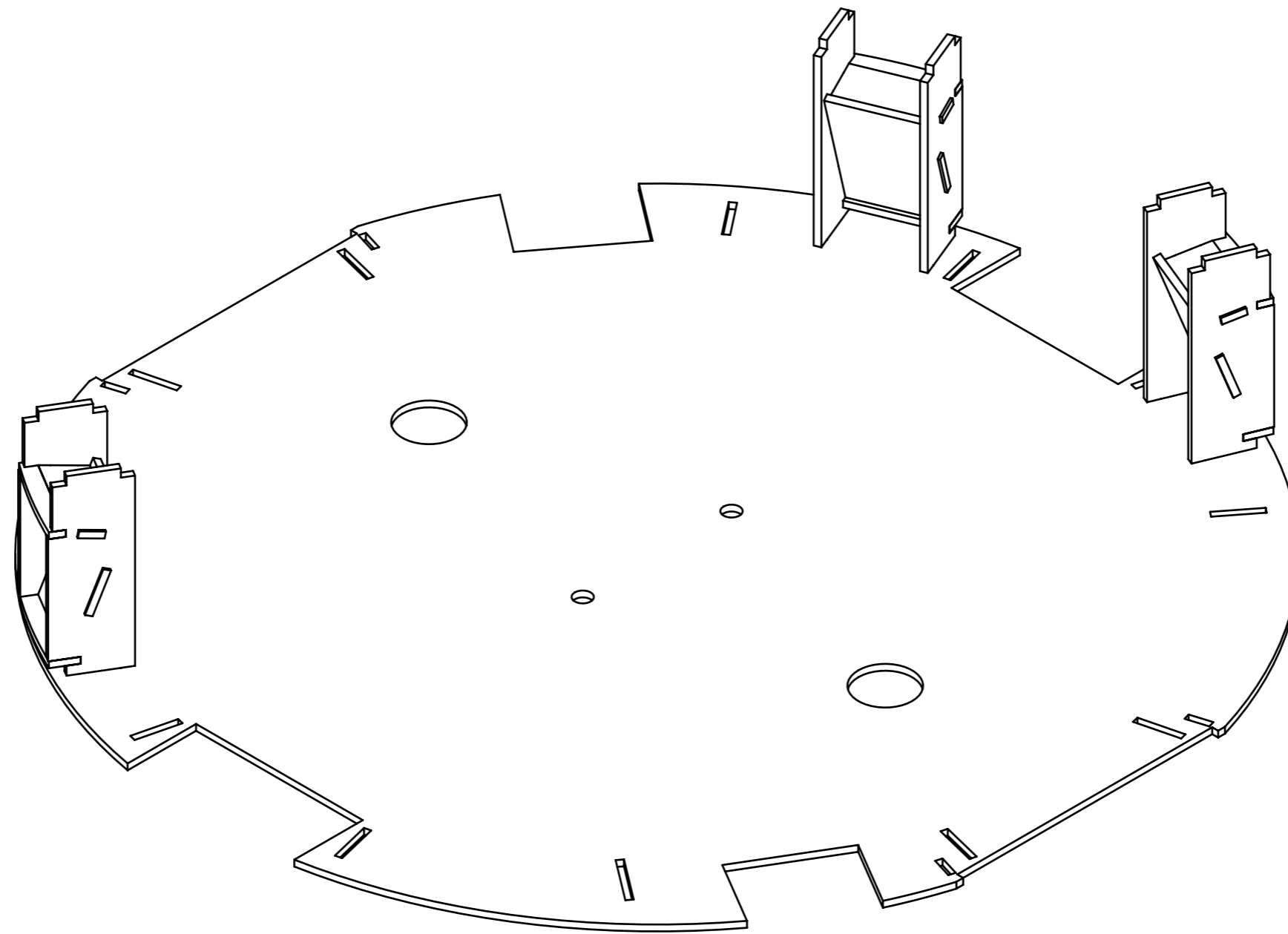
3 LAYERS
PROPERLY GLUE
FACES

SHAPE BOTH ENDS
TO SUITE WHEN
ADDING TO ASSEMBLED
BODY



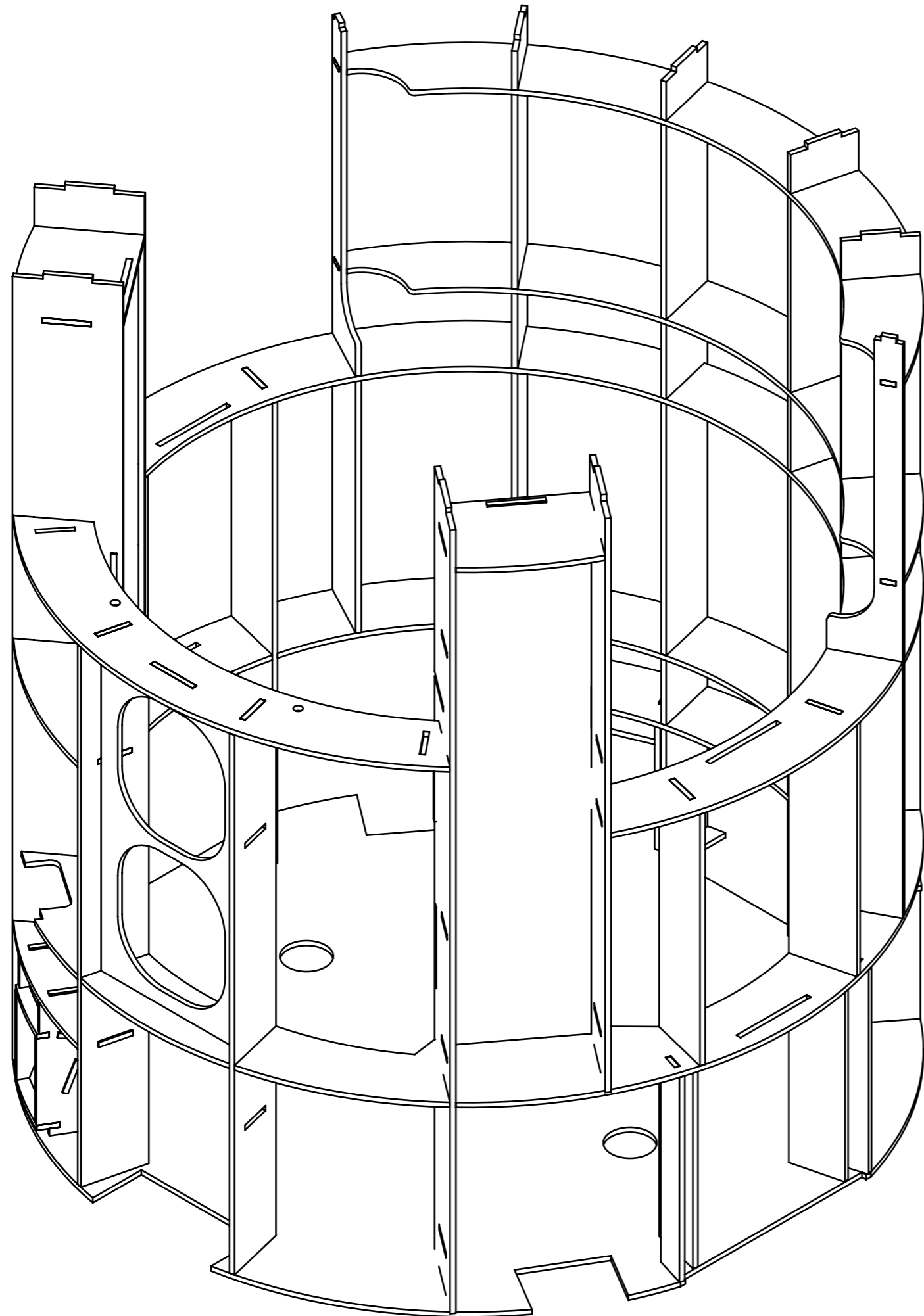
NOTE HANDING !

STEP 2



DRY ASSEMBLE

STEP 3



DRY ASSEMBLE

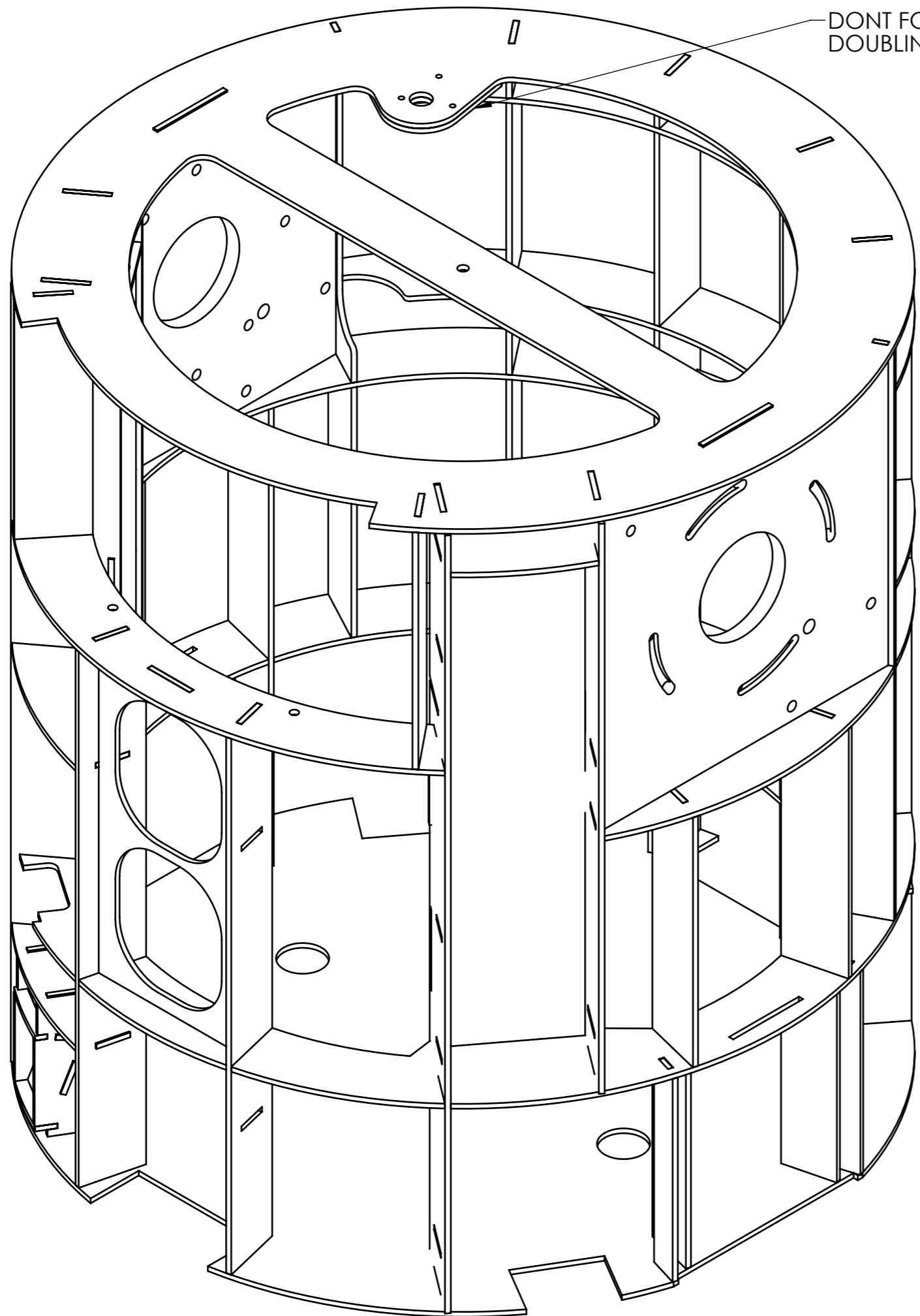
NOTE
THERE IS NO REAL ASSEMBLY SEQUENCE

YOU MAY FIND THAT THE BODY
IS LOOSELY ASSEMBLED, AND
SLOWLY WORKED INTO ITS
FINAL POSITION

SOME OF THE PARTS OF THE LHS DID
NOT MIRROR CORRECTLY ON THE
MODEL / DRAWING

BODY CAN ONLY REALY GO
TOGETHER ONE WAY

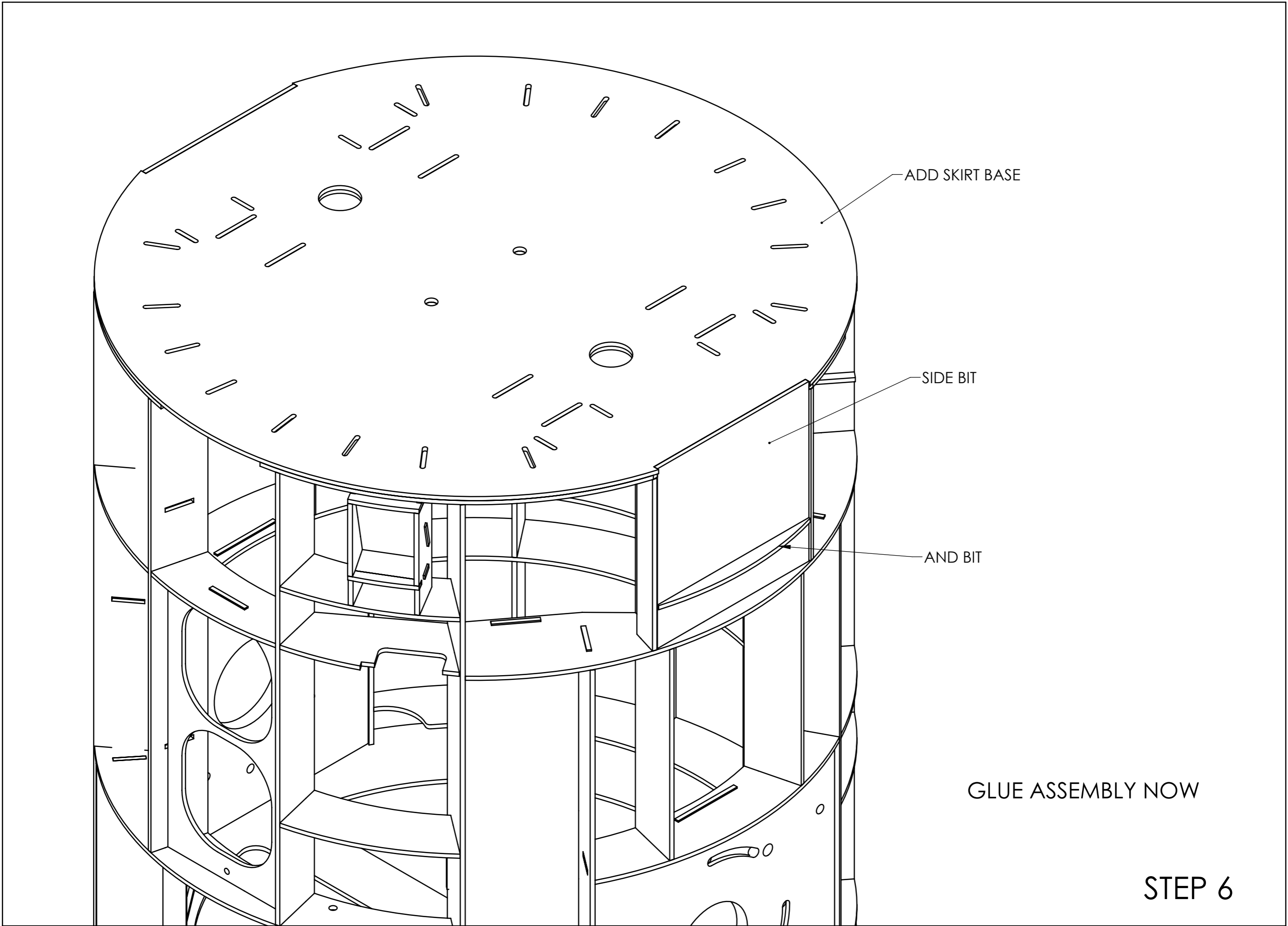
STEP 4



DONT FORGET MOTOR
DOUBLING PLATE !

GLUE ASSEMBLY NOW

STEP 5



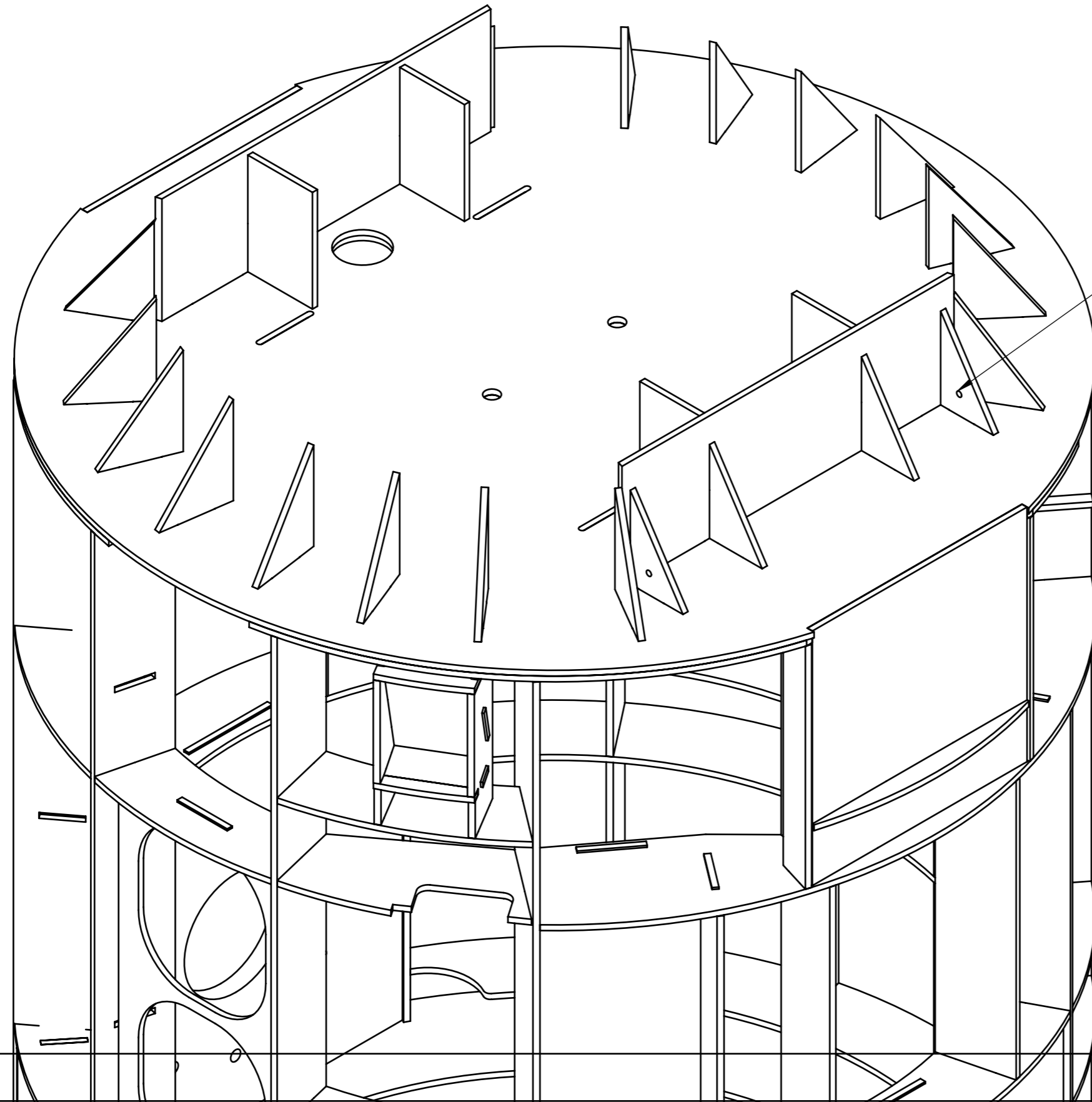
ADD SKIRT BASE

SIDE BIT

AND BIT

GLUE ASSEMBLY NOW

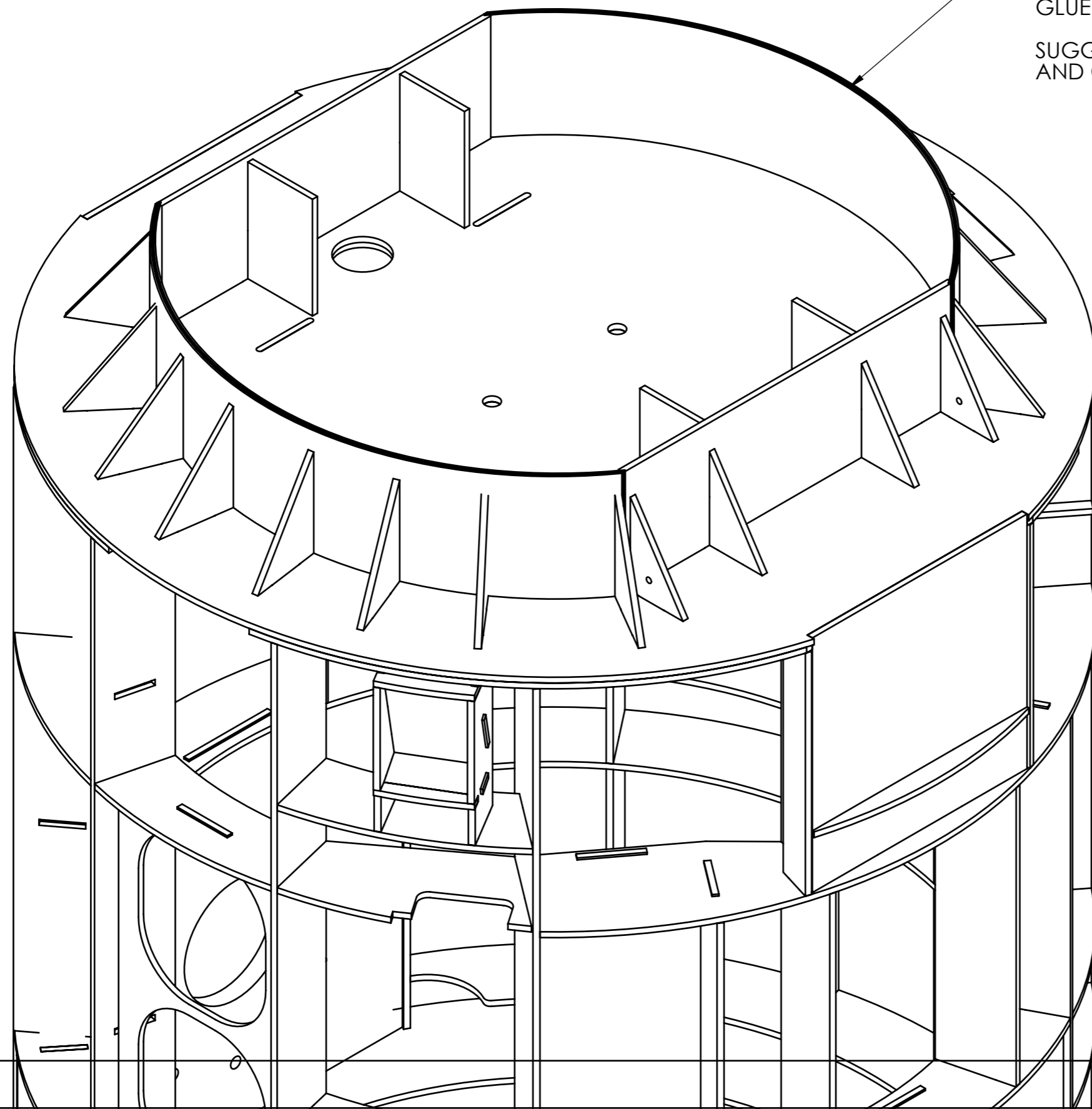
STEP 6



NOTE HOLES TO
IDENTIFY DIFFERENT BIT

GLUE ASSEMBLY NOW

STEP 7

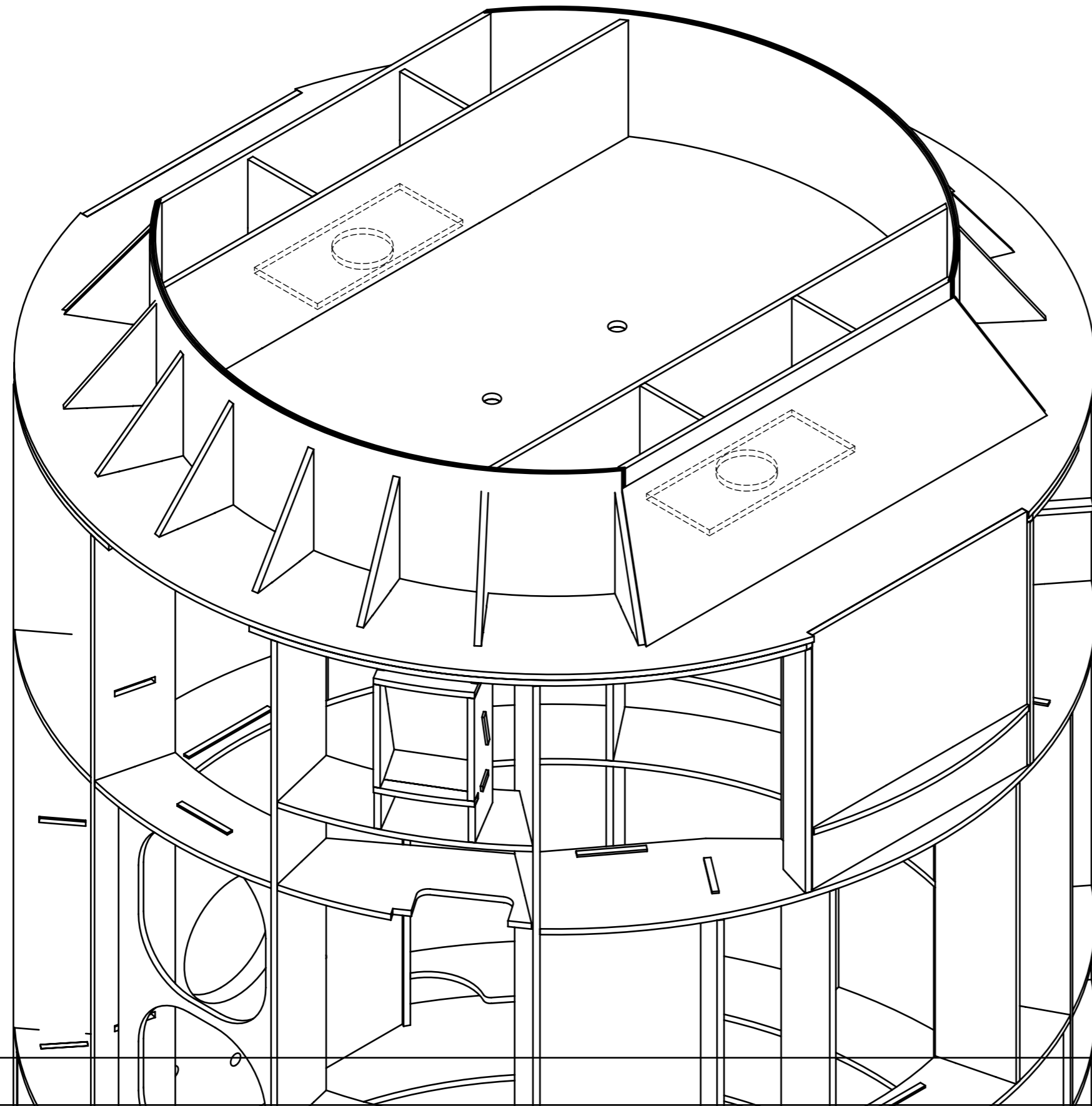


3 LAYERS OF 1mm X 64mm HIGH
MAKE TO SUITE
FILE TOP SMOOTH ONCE
GLUE HAS CURED

SUGGESTED TO FIT/GLUE FIRST STRIP TO RIBS
AND GLUE THE NEXT LAYERS ON THE INSIDE

GLUE ASSEMBLY NOW

STEP 8



GLUE ASSEMBLY NOW

STEP 9

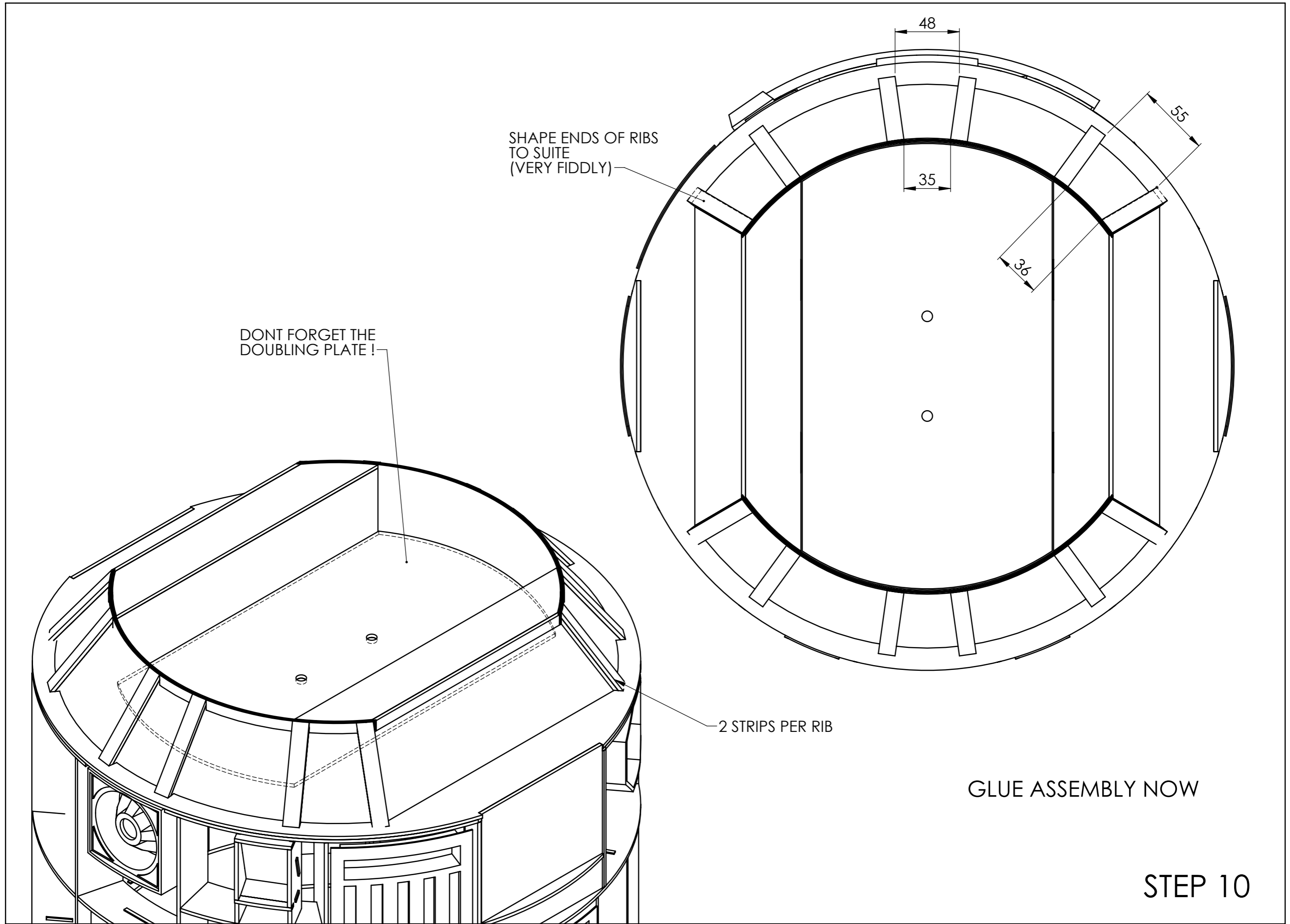
SHAPE ENDS OF RIBS
TO SUITE
(VERY FIDDLY)

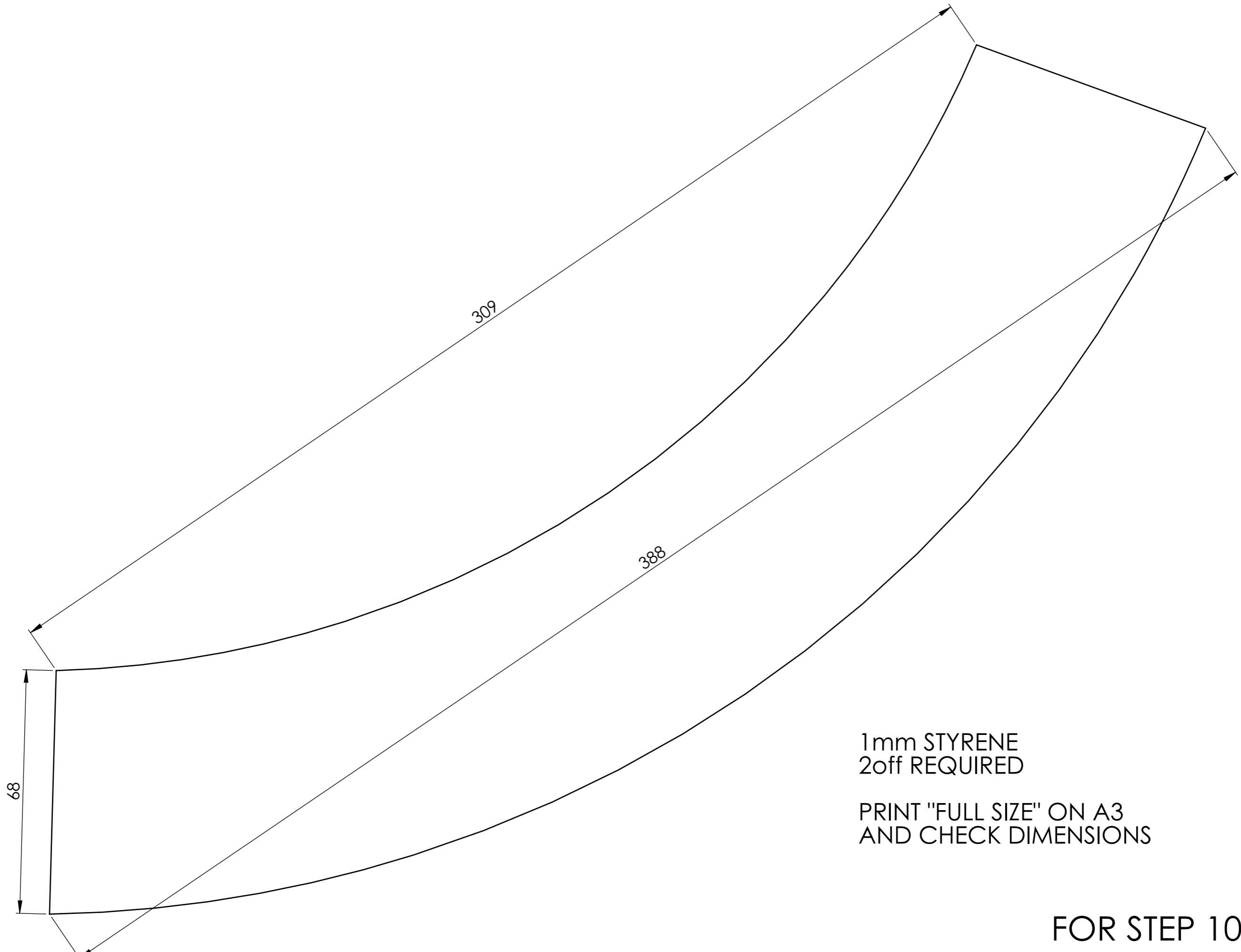
DONT FORGET THE
DOUBLING PLATE!

2 STRIPS PER RIB

GLUE ASSEMBLY NOW

STEP 10





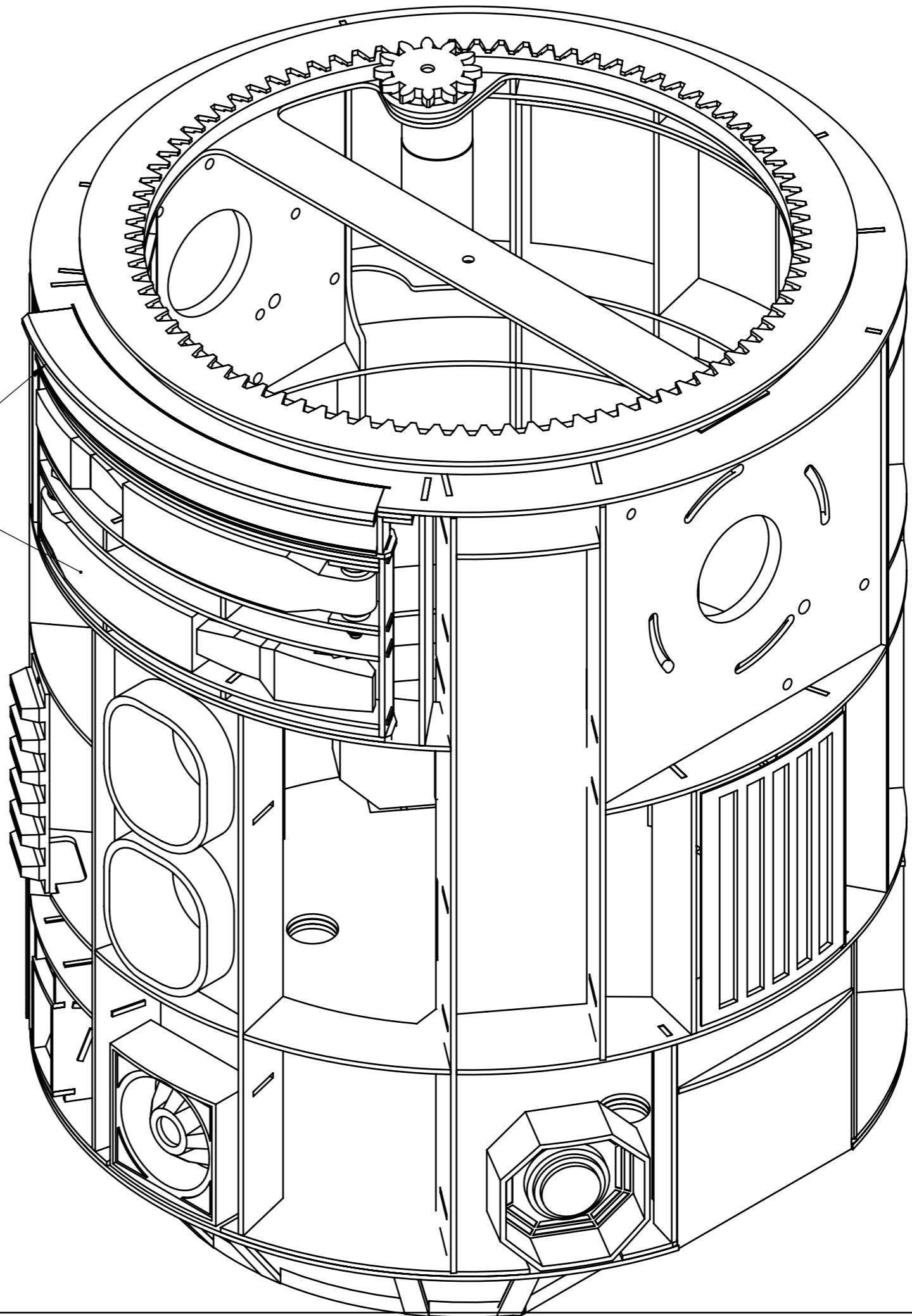
1mm STYRENE
2off REQUIRED

PRINT "FULL SIZE" ON A3
AND CHECK DIMENSIONS

FOR STEP 10

TEST FIT ARM BOX
AND LARGE DATA PORT
BEFORE SKINNING

IF YOU WANT REMOVABLE ARM BOX
INWARDS, YOU WILL NEED TO TRIM BITS



STEP 11